

VTECH- SOYA LECITHIN PLANT

Lecithin is making by gum, this is separated from Crude soya bean oil during degumming process.



After solvent extraction process we get the crude oil from seed. This oil is not ready to use directly for human consumption, so we have to refine it during refining process oil is passed from so many process the first process degumming.

In degumming hot water is mixed in the crude oil by help of inline mixer and transfer it to centrifugal separator by help of PD pump & than gums & oil is separated by centrifugal separator.

Now we have got the product lecithin gum, this is raw material to produce Lecithin. feed material has following specifications.

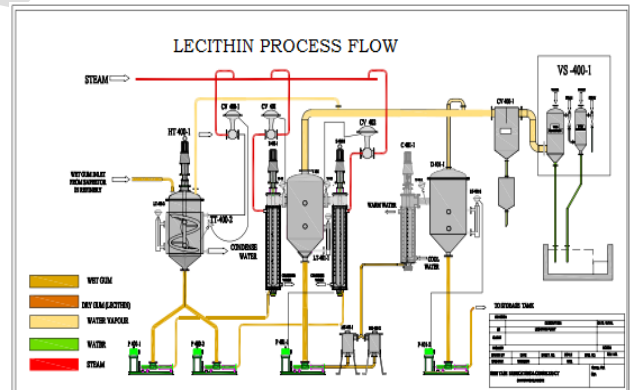
FEED MATERIAL SPECIFICATION

Moisture	: 40-50% Maximum
Acid Value	: 18-20 as per gum
Benzene insoluble	: 1.5 Maximum
Acetone insoluble	: 60-65 Maximum

To make lecithin gum has passed from following processes.

- 1) Heating
- 2) Vacuum Evaporation
- 3) Vapor separation
- 4) Filtration
- 5) Cooling
- 6) Storage

We can better understand the process flow by help of following diagram.



As per above Diagram Raw material is first heated in the pre heater and passed to scraped surface evaporator for vacuum evaporation process in this process product is continuously heated & evaporated by help of vacuum.

Then product is transfer to vapor separator in this stage water vapors is separated from lecithin.

After removal of moisture from lecithin it will transfer for cooling process via filters for filtration the product is cooled by help of cooled water that transferred to lecithin storage tank.

After this complete process we get the output finish lecithin's that have following specification.

FINISH PRODUCT SPECIFICATION

Moisture	: 0.5% Maximum
Acid Value	: 18-20 as per gum
Benzene insoluble	: 1.5 Maximum
Acetone insoluble	: 60-65 Maximum



WHY? SYFC MAKE LECITHIN PLANT

SYFC make very economic lecithin plant, plant is automated, and ready to use after install it on civil foundation, we have connect steam supply, water supply, raw material supply, vacuum line, & finish product output line connect to lecithin

storage tank that produce the good quality finish product with minimum Operating cost.

1) Minimum Investment Cost.

Syfc make lecithin plant is very economic because it is high production based compact plant that have minimum investment cost.

2) Minimum Operating Cost.

Operating cost of this plant is very low because it is a skid mounted compact plant & in it we use high efficiency drives & VFDs that consume the low power that reduce the operating cost of plant.

3) Easy to Operate.

Full plant is operated by a single point of contact this is main control panel & can be handle by a single operator.

4) Automated Plant.

The plant is fully automated electro pneumatic temp. Controller is used in it that maintain the uniform temp in the equipments that prevent the burning of product. & Automatic level transmitter is in this plant that maintains standard level of products in the vessel all drive is controlled by VFDs.

5) Full Process under vacuum.

In SYFC make lecithin plant from start to end point whole process is under vacuum that prevent the

oxidation & control peroxide value of product.

6) Reliable

This type plant is first manufactured by SYFC in India approximate 40 industries are using that plant in India & some client at Nigeria & South Africa & Nepal.

7) Compact:

SYFC make plant is very compact comparison of other make plants this is specially designed for export purpose & to fulfill need of low capacity plants & machinery.

The whole plant can be installing on 180 Sq. Fit area and a single operator can run the plant successfully.



About SYFC (SHRI YASH)

Our expanding technological base and association with industry giants have enabled us to successfully Making Delighted clients across INDIA and abroad countries industries. We have been certified with ISO 9001:2008 & CRISIL RATING for

Following a standard quality management system. Our company focuses on wealth of engineering talent to create a commercially viable solution based upon the specific application requirements of the clients.

Following are our delighted customer

- 1) Ruchi Soya Industries Limited
- 2) Adani Wilmar private Limited
- 3) Kumar Metal Industries Limited
- 4) Kriti industries(I) Limited
- 5) Rasoya Proteins' Limited
- 6) Khyati Foods Private Limited
- 7) Servotech (I) Limited
- 8) Rama Phosphate limited
- 9) Gujarat Ambuja Exports Limited

Contact us

You can contact us on following address

VTECH ENGINEERING

Office: 248, Parag Nagar, Near Royal Bunglow Prime city, Sukhaliya Indore - (452010) MP INDIA, Contact No: +91 - 9425314138

Factory: Halka No. 05, Agrawal Compound Khatipura Near Sector "D", Sukhaliya Indore - 452010, MP INDIA

Contact: +91 7314281158, 8818999901

Email: vksingh@shriyashfabricators.com

Web:

<http://www.lecithinplantmanufacturers.com>

<http://www.vtechindore.com/>

Facebook:

<https://www.facebook.com/shriyashfabricators>

